


InfoNet Day

Information & Networking


2010



Microsoft®
Lync Server 2010


Transforming the Way People Communicate

Microsoft Schweiz GmbH
Andre Hagmann
Senior Technology Specialist
andre.hagmann@microsoft.com




Microsoft and Communications


Over the years, our definition of productivity has evolved with our users




Productivity

**Office Professional 2010**
Content

**Exchange**
Messaging

**SharePoint Server 2010**
Collaboration

**Lync Server 2010**
Communications

Microsoft, A. Hagmann

1

Converged Communications

Delivering on Critical Communications Features

The diagram illustrates the progression of Microsoft's unified communications platform. It features three large, colored arrows pointing from left to right: a blue arrow for Office Communications Server 2007, an orange arrow for Office Communications Server 2007 R2, and a green arrow for Lync Server 2010. Below each arrow is a box listing key features.

- Office Communications Server 2007:**
 - "Anywhere Access"
 - IM & Rich Presence
 - Desktop integration
 - Voice features for mobile workers
 - Unified messaging with Exchange 2007
 - Audio and video conferencing
 - Web conferencing (LiveMeeting client)
- Office Communications Server 2007 R2:**
 - Desktop sharing
 - Dial-in audio conferencing
 - Higher resolution video
 - Single Number reach
 - Attendant Console
 - Response Groups
 - SIP Trunking
- Lync Server 2010:**
 - Integrated conferencing experience
 - Enhanced 9-1-1 for NA
 - Survivable Branch Appliances
 - Call Admission Control
 - More options for devices (including lower cost)
 - Call Park, Malicious Call Trace, etc.
 - Additional data center survivability options

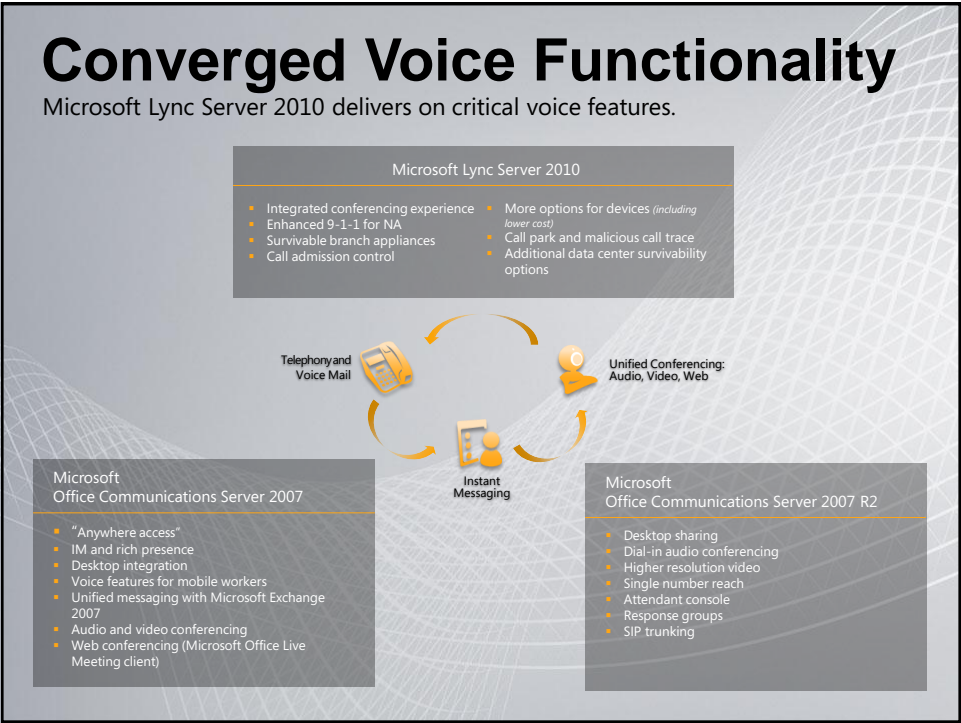
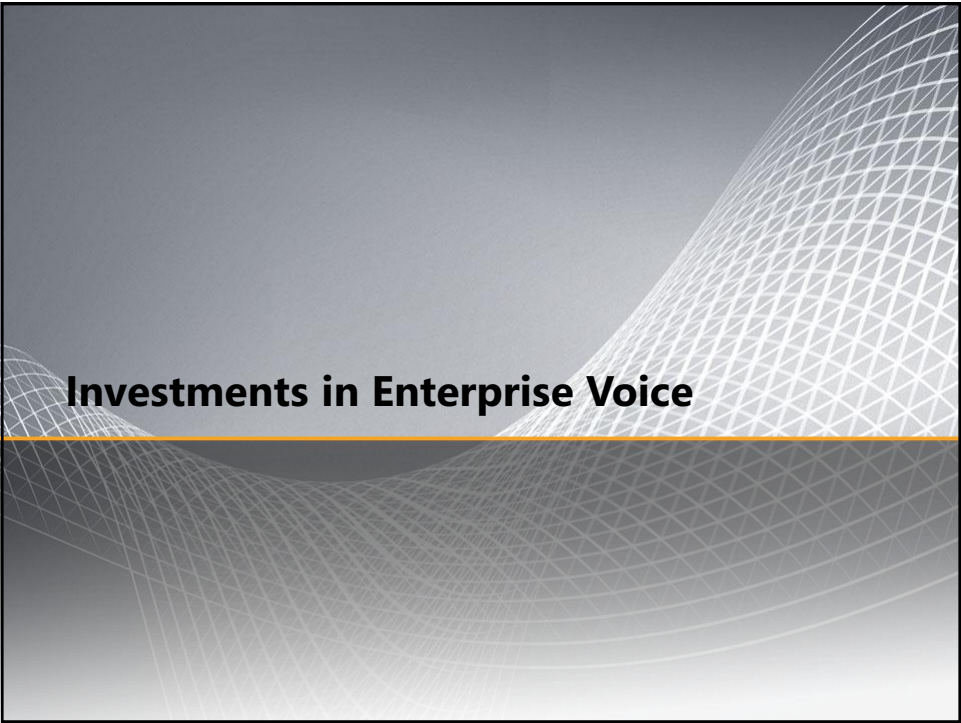
Next Generation Communications

Find and connect with the right people

The screenshot shows the Microsoft Lync desktop application. The main window displays a list of frequent contacts with their status (e.g., Offline, Available). A contact card for Steve Ballmer is highlighted, showing his profile picture, name, title (CEO, US-Executive-CEO), and a list of direct reports including Andy Lees, Bill Gates, Bob Muglia, Brad Smith, Craig Mundie, Debbie Hill, Don Matrick, Dorothy Veth, and Eric Rudder. A green callout box labeled "User Experience" is positioned to the right of the screenshot.

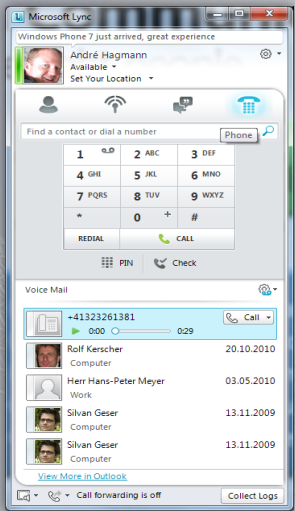
User Experience

- User Experience across Office Systems
- Picture provided by Active Directory
- Searches on skills, projects, interests
- Connecting with everything you need
- Enhanced Privacy Control
- Connecting from wherever you are



Next Generation Communications

Find and connect with the right people

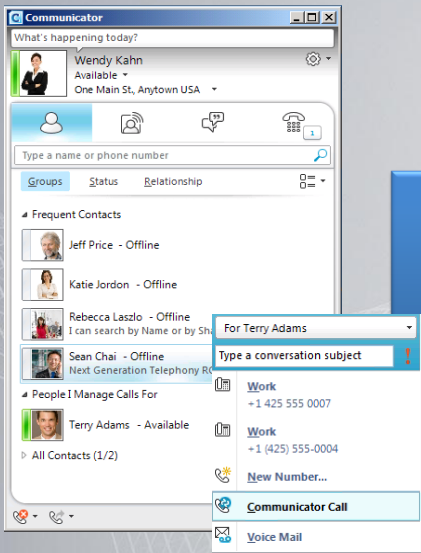


Voice Client

- Enhanced UI for Voice Features
- Enhanced Audio Device configuration
- Integrated Voice Mail from Exchange
- Conversation and Communication History
- Call Forwarding, Ringtones and Sound

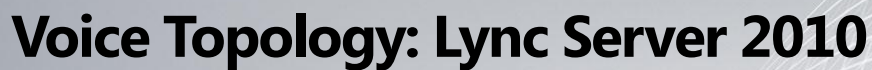
Advanced Voice Features

Closing cap of advanced Voice feature



Advanced Feature

- Boss / Admin Delegates
- Answer Incoming Calls On Behalf
- Response on Behalf Of RGS
- Initiate Calls on Behalf Of Boss
- New Contact group in MOC "14" "People I Manage Calls For"





Bringing conferencing to everyone

Whatever you Choose



Microsoft Lync 2010 & Webcam



Existing Conferencing Room with AV capability



Telepresence and room systems

Wherever you are



Inside your organization



Microsoft Lync Server 2010



Mobile workforce



Customer/partners



Remote workers

Outside the firewall

As much as you like

Web conferencing



Video conferencing

- Tele-presence systems
- Extending AV enabled rooms
- Desktop with webcam



Audio conferencing



Conferencing Roadmap

OCS 2007 R2

Communicator

- Audio Conferencing
- Desktop Sharing

Live Meeting

- Audio conferencing
- Desktop & Application Sharing
- PowerPoint Presentations
- Whiteboard
- Polling, Q&A, etc.

Lync Server 2010

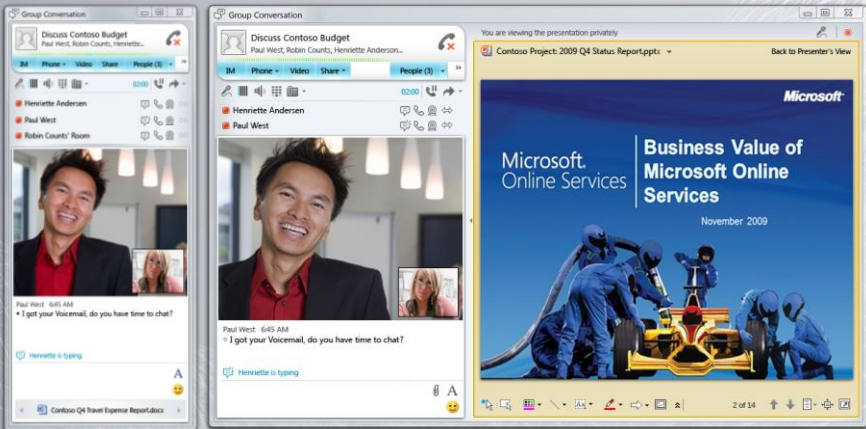
Lync 2010

- Richer Audio Conferencing
- Desktop & Application Sharing
- PowerPoint Presentations
- Whiteboard
- Polling

Live Meeting

- Available during migration to Lync Server 2010
- Use Live Meeting Service for very large meetings

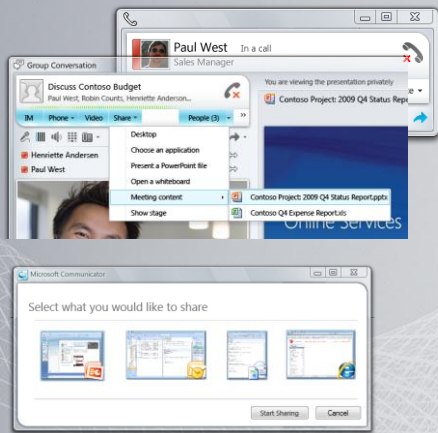
Integrated Conferencing Experience



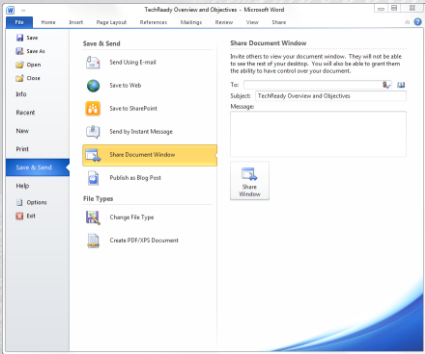
Show the "stage" Share your desktop or an application, show a presentation, or brainstorm on a whiteboard in a "stage" that extends the conversation window.

Asynchronous viewing Presenters can navigate other content in the meeting. Helpful for reviewing content before presenting or taking notes on the shared whiteboard.

Integrated Experience in Office System



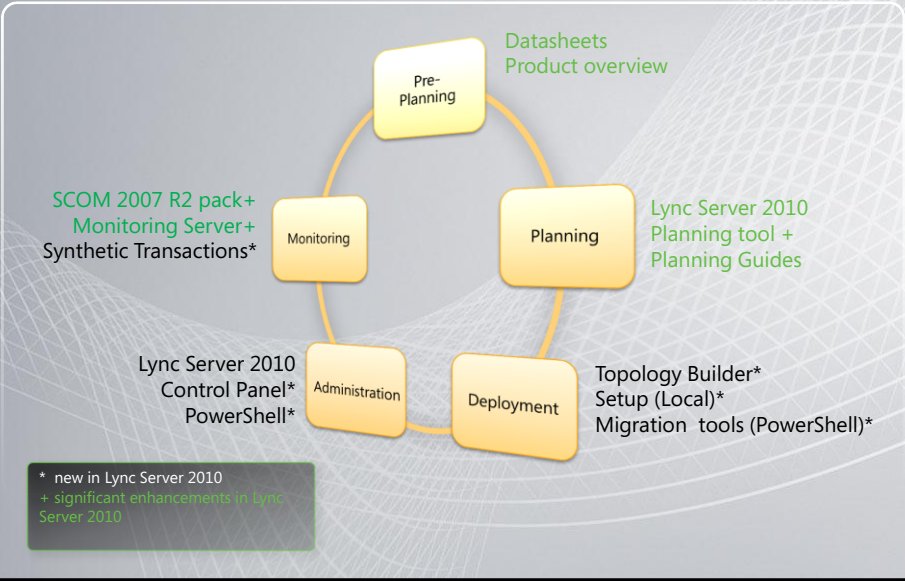
Office Integration Start a collaborative conversation directly from familiar Office applications.



Sharing Activity Users are presented with a more visual way of deciding which activity they want to engage in around sharing.

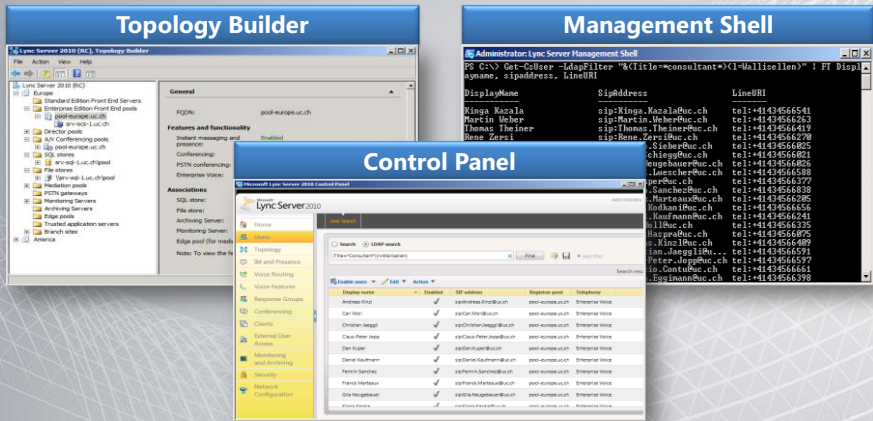
Investments on Management

Lync Server 2010 Manageability Lifecycle



Management and Operations

With a completely updated and newly streamlined management infrastructure, Microsoft Lync Server 2010 is easier than ever to deploy and manage.



- Simplified Deployment thru Topology Builder
- Improved, more intuitive Web Management GUI
- Powerful command line shell supports automation and batching

Manageability Enhancements

- Lync Server 2010 Control Panel (CSCP)
 - Silverlight™ based administration console
 - Task oriented and uses underlying PowerShell Infrastructure
 - Replaces MMC
- PowerShell
 - Complete access to all administrative tasks
 - Automation interface
 - Replaces Windows Management Instrumentation (WMI)
- Role Based Access Control (RBAC)
 - Access controlled by security group membership
 - New delegation model: site aware
- Synthetic Transactions – powershell based framework that allows admins to proactively identify faults in the system, and raise alerts in SCOM

Enterprise voice manageability

Connecting from anywhere

Call Admission Control	E-911	Branch Availability
<ul style="list-style-type: none">• Fully Configurable with locations, topology, links, and limits for voice & video• Dynamically enforced with full path assessed at session initiation• If session would exceed limits, re-route or failure• Voice calls may be re-routed to the PSTN• May use different links for voice and video if desired; e.g., re-route video over Internet	<ul style="list-style-type: none">• Emergency call and location conveyed from via centralized SIP trunk to 3rd party partner for PSAP routing• No P-ANIs required• Integrated Location Information Server (LIS)• Locations can be based on subnet, switch, port, WiFi access point• Mobility fully supported, for hard phones and soft phones	<ul style="list-style-type: none">• Survivable Branch Appliance (SBA) from multiple suppliers• Includes gateway and software in an appliance form factor• If WAN fails, branch clients use PSTN gateway in appliance for calls• If appliance fails, branch clients use data center as backup• Automatic failover and fallback

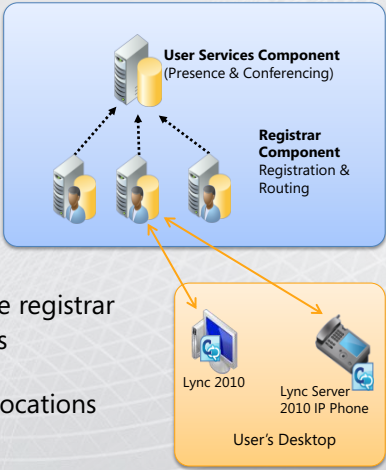
New Virtualization

- What's supported?
 - Virtualization of specific Lync Server 2010 roles
 - SQL, Exchange, Active Directory® Domain Services (AD DS) virtualization (as per guidelines)
 - Hyper-V R2 (2008 not supported), VM Ware (per SVVP)
 - Client virtualization (except Audio/video - use IP phone)
- Not Supported
 - Branch office/Gateway only/Mediation server + gateway
 - Standard Edition (single server deployed as "Datacenter" site)
 - Live migration of VMs via SCVMM (ongoing calls/sessions will be dropped)
- Virtual Deployment
 - 4 VMs – Front end, back end+ file store, A/V MCU, Edge
 - 1 Physical machine – 16 cores, 16 GB, 500 GB SAS drive, Dual NIC, Intel Xeon E7450 procs. Dedicated to Communications Server "14" only
 - Pilot no HLB or DNS LB. Production – Needs HLB.
 - Scale reduction (up to 50%) compared to non-virtualized

High Availability

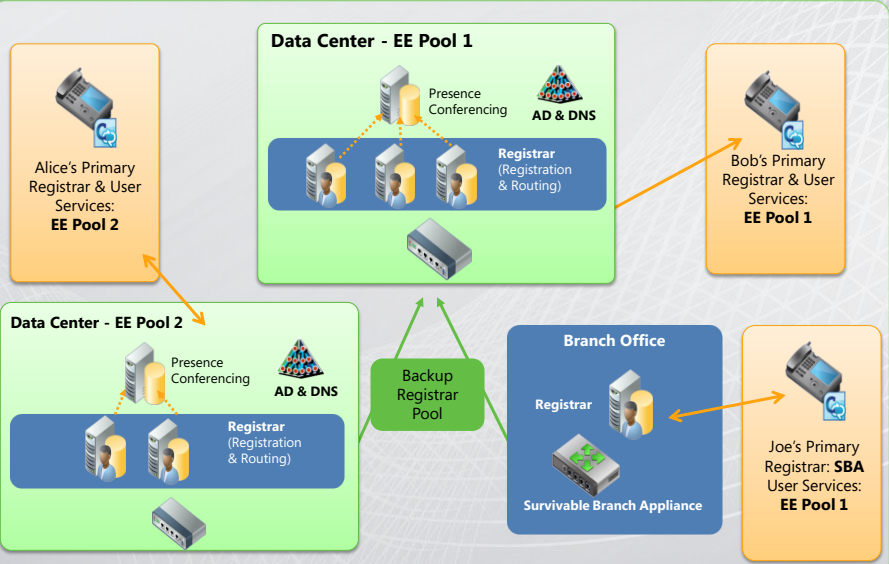
High Availability

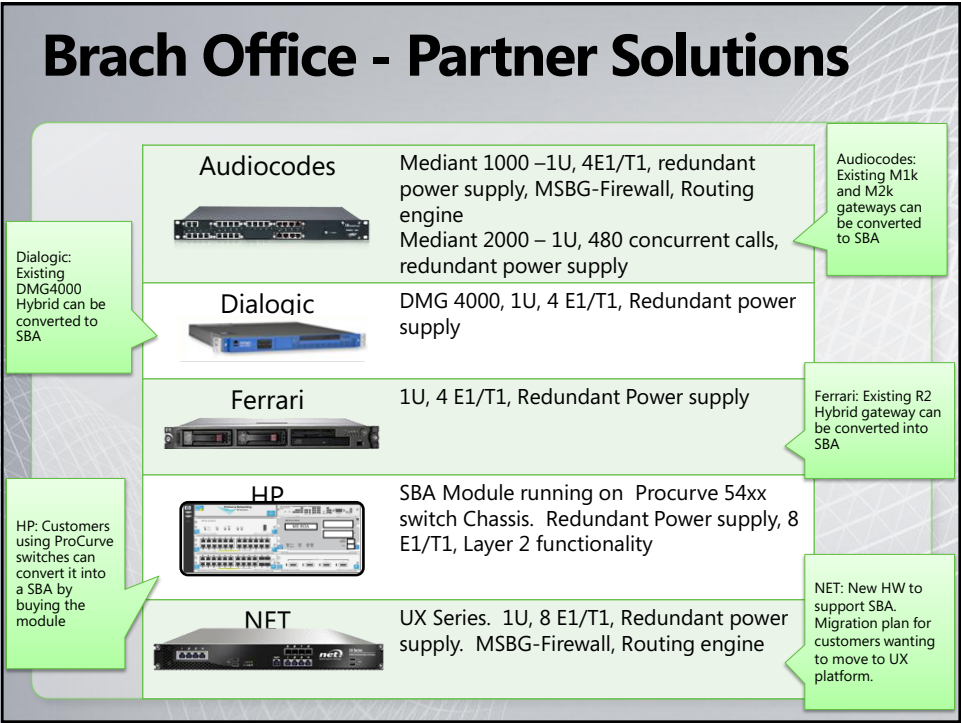
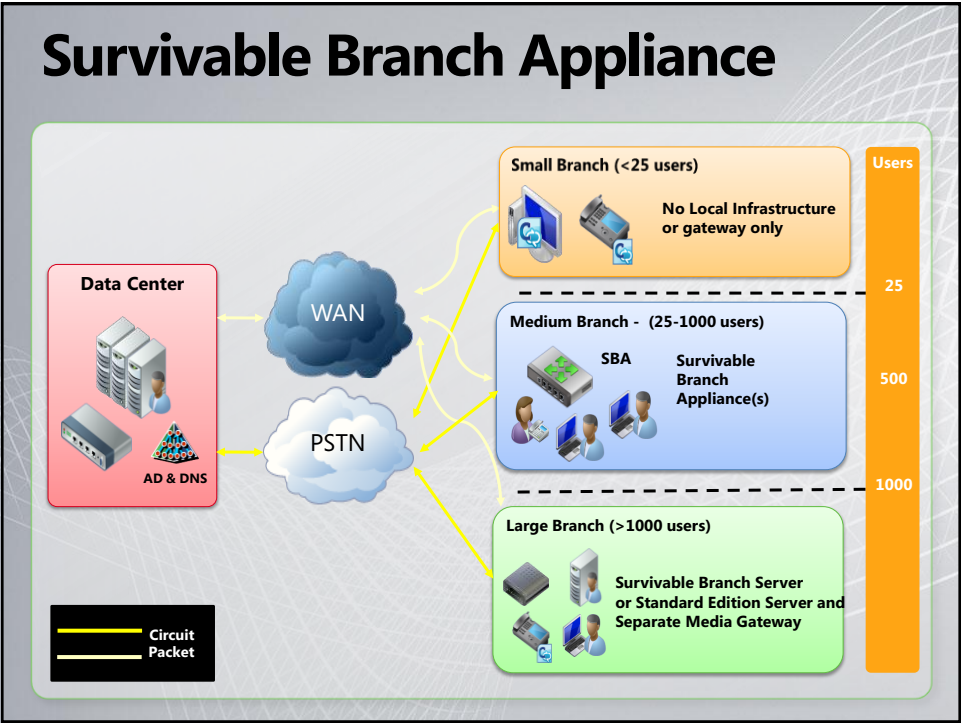
- Registrar Component
 - Registration and Routing
 - Each registrar has its SQL Express DB
- User Services Component
 - Presence & Conferencing
- Registrar and User Services are collocated in same physical Front End in the DC
- All user end points register with same registrar
- Users are load balanced by Registrars using a Distributed Hash Algorithm
- Registrar can be installed in remote locations



Data Center Disaster Resiliency








Option 1: Single Microsoft Lync Server 2010 system split across two Data Centers





Lync Server Interoperability

- Investments & Partnerships

Devices	Desktop	Video Conferencing	Media Federation	Mobile	Inter domain Federation	Public IM Federation
						

Bedankt 谢谢您
Thank You!
Grazie
Danke Merci
谢谢您 Tak
Obrigado Gracias